

## CORONAVIRUS SIGNAGE

# ORDER FORM

## SIGNAGE

### MOVABLE SIGN / \$93.69

\$13.69 ea. - Coroplast 30" x 40" (Print Only)  
\$80.00 - Stand Only

### POST SIGN / \$92.79 (METAL OPTION)

\$10.12 ea. - Coroplast 12" x 18" (Print Only)  
\$22.79 ea. - Metal 12" x 18" (Print Only)  
\$70.00 ea. - Stand Only

### FLOOR GRAPHIC / \$7.65

\$7.65 ea. - Text Walk 8" x 8"

### HAZARD POST SIGN / \$16.65

\$15.73 ea. - Styrene 30" x 42"  
\$16.65 ea. - Coroplast 30" x 42"

### DIRECTIONAL SIGN / \$7.18

\$7.18 ea. - Coroplast 10" x 23"

### YARD SIGN / \$8.43 (INCLUDES STAND)

\$7.69 ea. - Styrene 17" x 23"  
\$8.43 ea. - Coroplast 17" x 23"

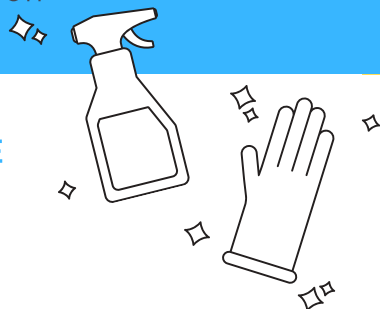
### BANNER / 36" X 60" (13OZ SCRIM)

1 - 10ct. --> \$42.98 ea.  
11 - 50ct. --> \$38.19 ea.  
51 - Plus --> \$33.25 ea.

\*Prices do not include kitting & shipping and may vary based on volume, square footage and configuration

### SANITIZING SERVICE

\$0.35 - \$0.75 per Sq. Ft.  
(Fogging Only)



## FACE SHIELDS

### DRIVE-THRU / \$45

Plexi 23" x 28"

\$45 - With Logo     \$33 - No Logo  
Perfect for drive-thru windows but can be installed virtually anywhere.

INSTALL : Double-sided tape on sides

### CHECKOUT COUNTER / \$82

Plexi 23" x 40"

\$82 - With Logo     \$70 - No Logo  
For use in checkout lanes and other locations w/o a hang point.

INSTALL : 1/4" Acrylic stand

### HOW DO I INSTALL THESE?

Each shield will come with instructions as well as all of the necessary materials/hardware for installation

## CLINGS

### CLEAR / \$9.02 - \$15.19

\$9.02 ea. - 8.5" x 11"  
\$12.82 ea. - 22" x 28"  
\$15.19 ea. - 30" x 40"

### WHITE / \$6.81 - \$13.69

\$6.81 ea. - 8.5" x 11"  
\$10.17 ea. - 22" x 28"  
\$13.69 ea. - 30" x 40"

## QUESTIONS?

CALL 770.406.8175  
TREY.PAUL@SKY-COMPANIES.COM